



.....	1
.....	1
.....	1
.....	1
.....	3
.....	3
.....	5
.....	10
.....	12
.....	12
.....	13
.....	17
.....	17
.....	20
.....	21
.....	22
.....	22
.....	23
.....	24

1

[2006]5

2

1

2

3

1

“

”

2

3

4

5

6

7

8

9

1

1

2

3

4

5

6

7

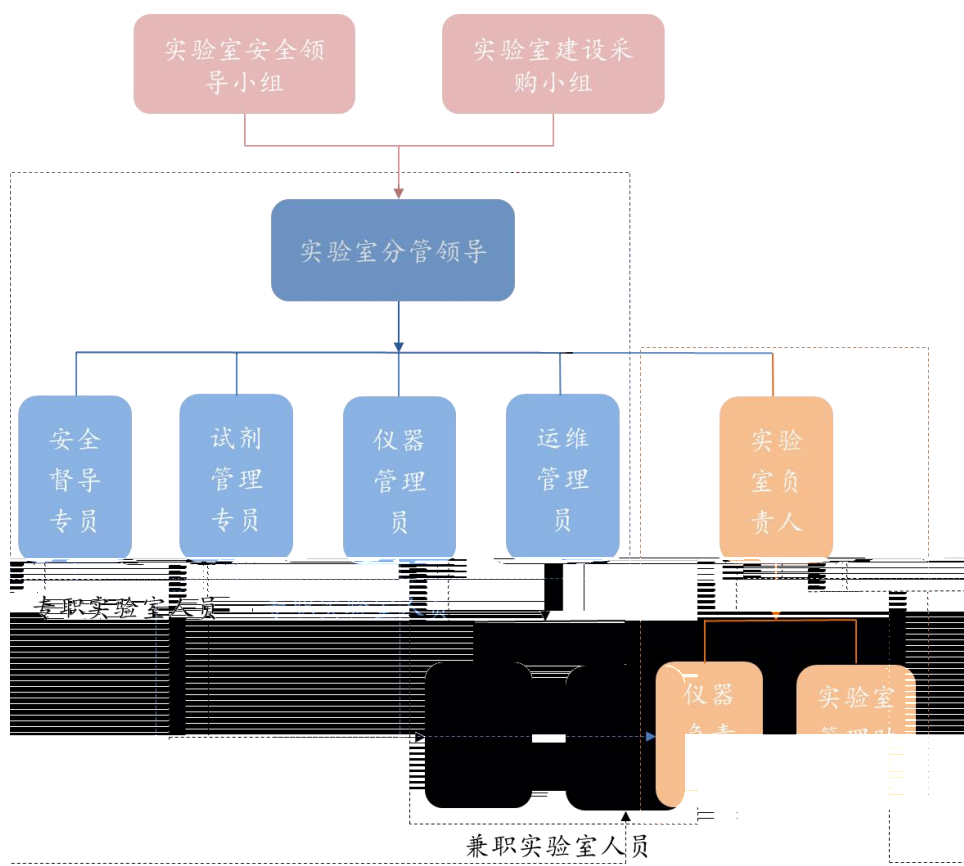
1~2

8

9

10

11



1

1

2

3

4

5

6

1

2

3

4

5

6

1

2

3



4

1

2

3

4

5

1

2

3

4

5

6

7

” 1

“

1

2

3

MSDS

4

5

6

1

2

3

1

2

3

4

5

6

7

8

1

2

1

2

3

4

5

“

”

1

1

2

3

4

5

6



“

”

“

”

“

”

1

“

”

2

3

4

5

6

7

8

1

2

3

4

5

6

7

8

9

10



“

”

11

12

13

14

15

16

17

18

19

20

“

”

21

“

”

1

22

1

2

3

4

5

6

7

8

9

1

12

2

3

4

5

6

10-15

7

8

9

10

1

“

”

2

3

(

)

4

5

6

11

12

13

14

1

2

3

2%

24 h

24

4

5

6

7            0.5

8

9

10

1

2

3

4

5

6



7

8

10

9

10

11

1

2

3

4

5

6

7

1-2

1

2

